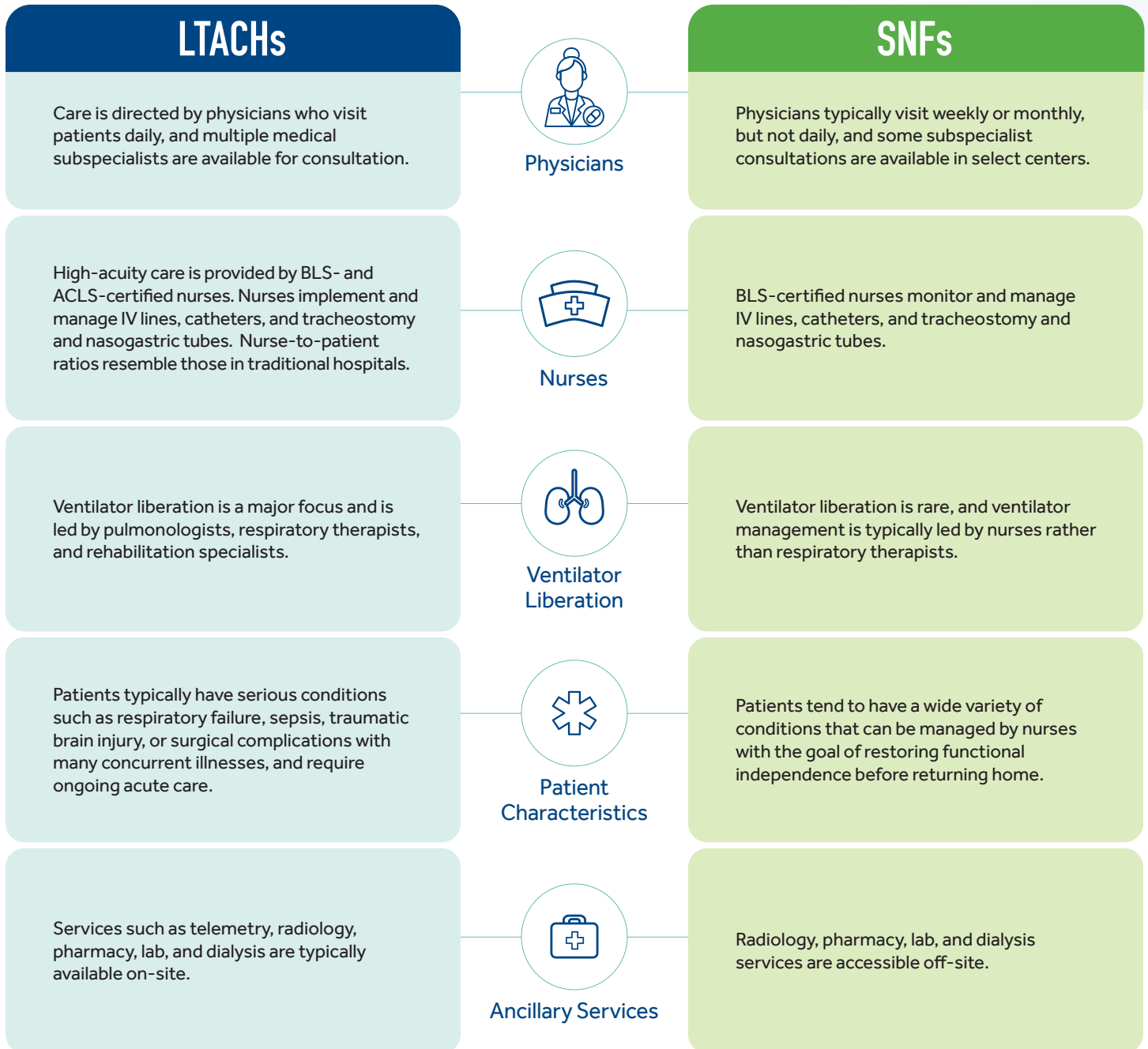


5 Setting Distinctions: LTACHs vs. SNFs

While long-term acute care hospitals (LTACHs) and skilled nursing facilities (SNFs) are both potential options for patients discharging from a hospital, they offer very different levels of care. The unique expertise and resources available at LTACHs allow them to improve outcomes for medically complex patients. Below are 5 key differences between LTACH and SNF settings that impact medically complex patient recovery and readmission rates.



NEXT LEVEL CARE. NEXT LEVEL RECOVERY.

Kindred Hospitals provide specialized long-term acute care and rehabilitation for medically complex patients.

Learn more about how Kindred Hospitals can improve outcomes for medically complex patients at [refertokindred.com](https://www.refertokindred.com).